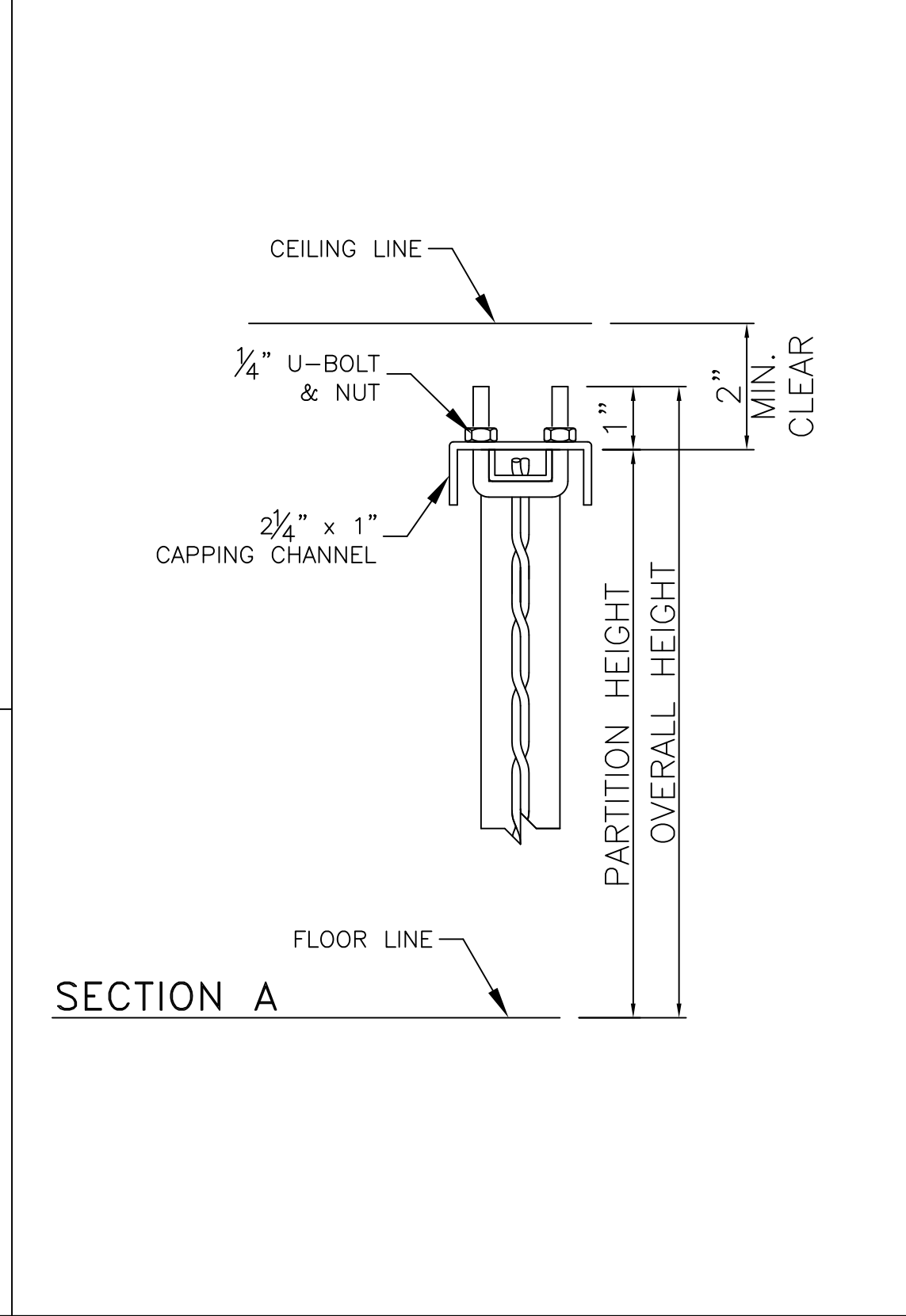
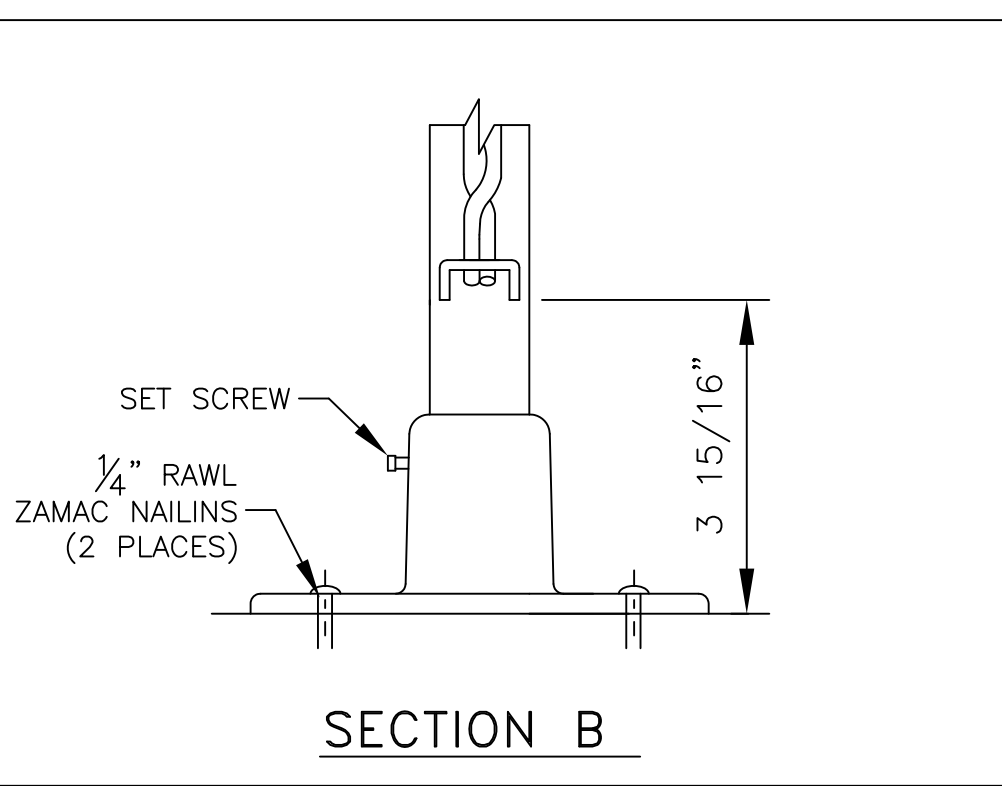
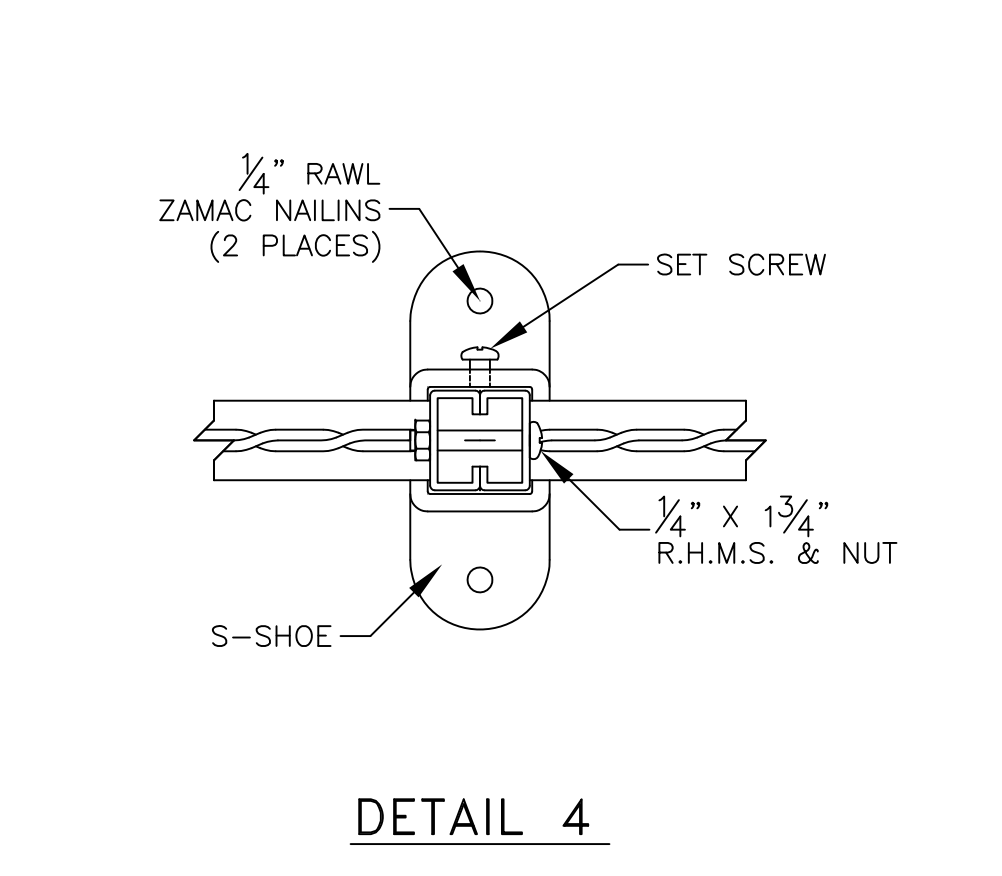
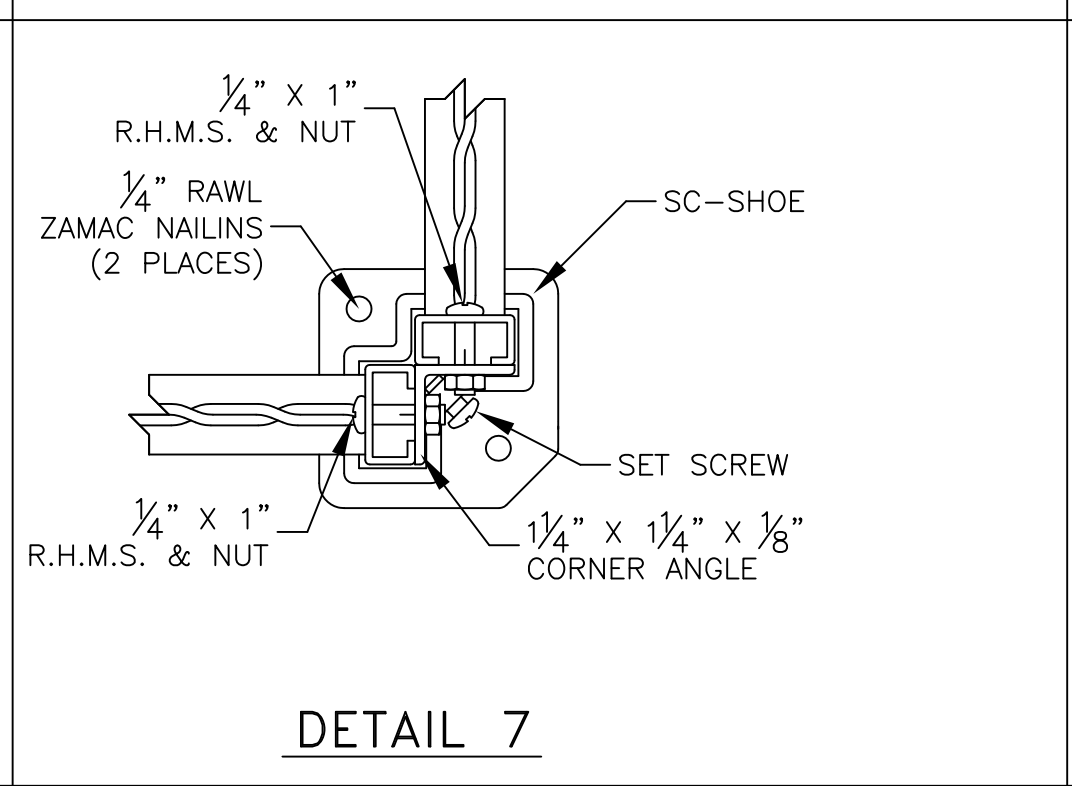
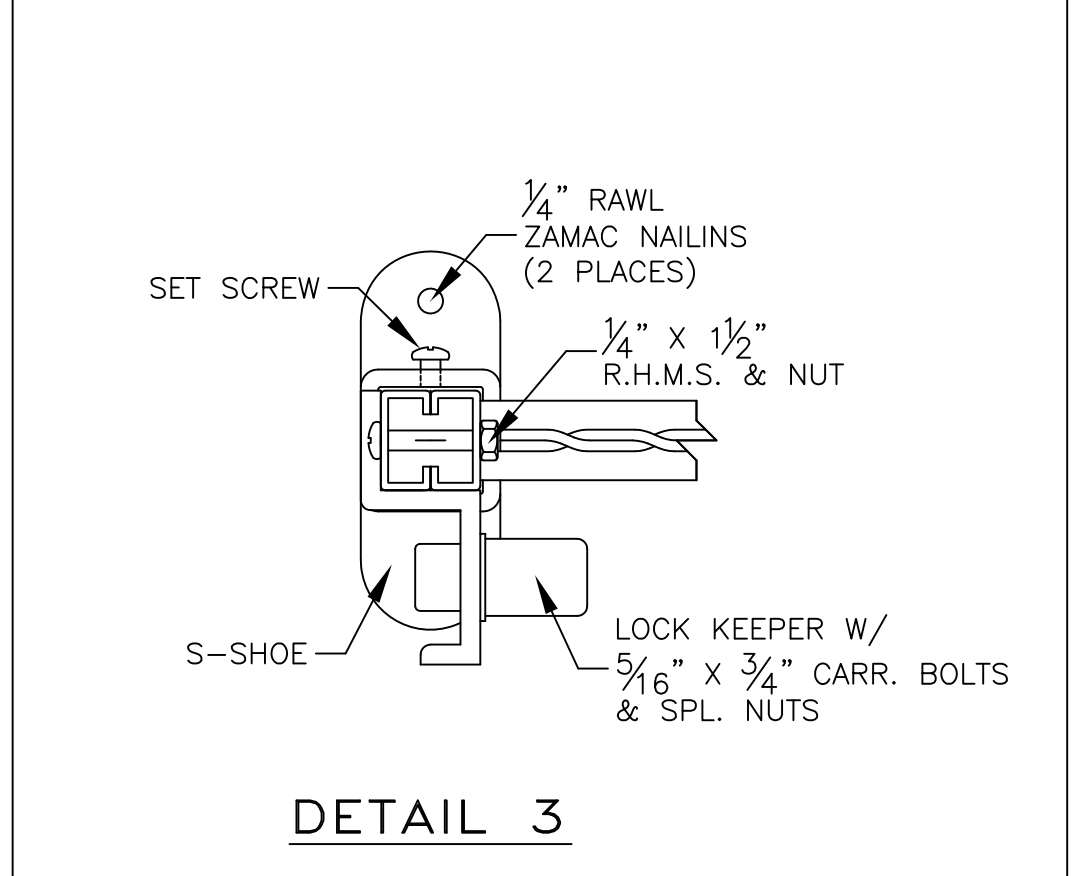
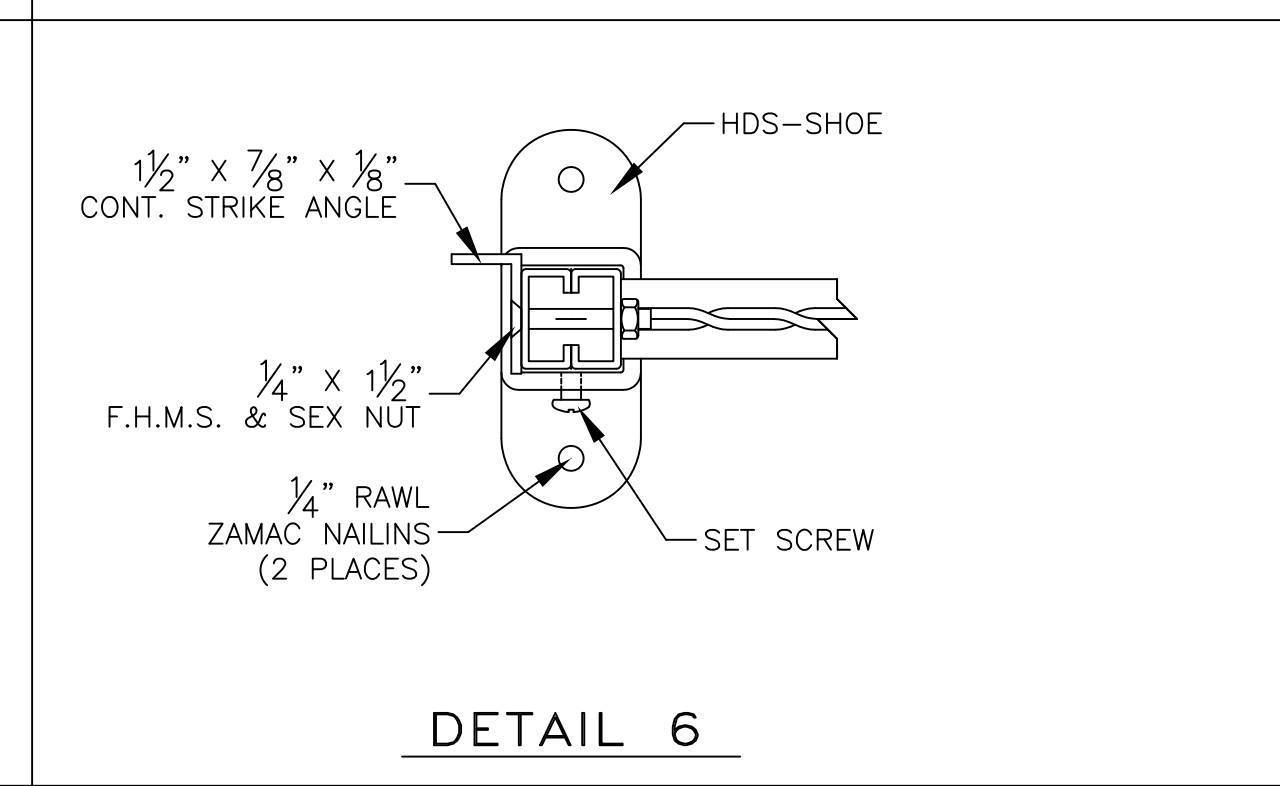
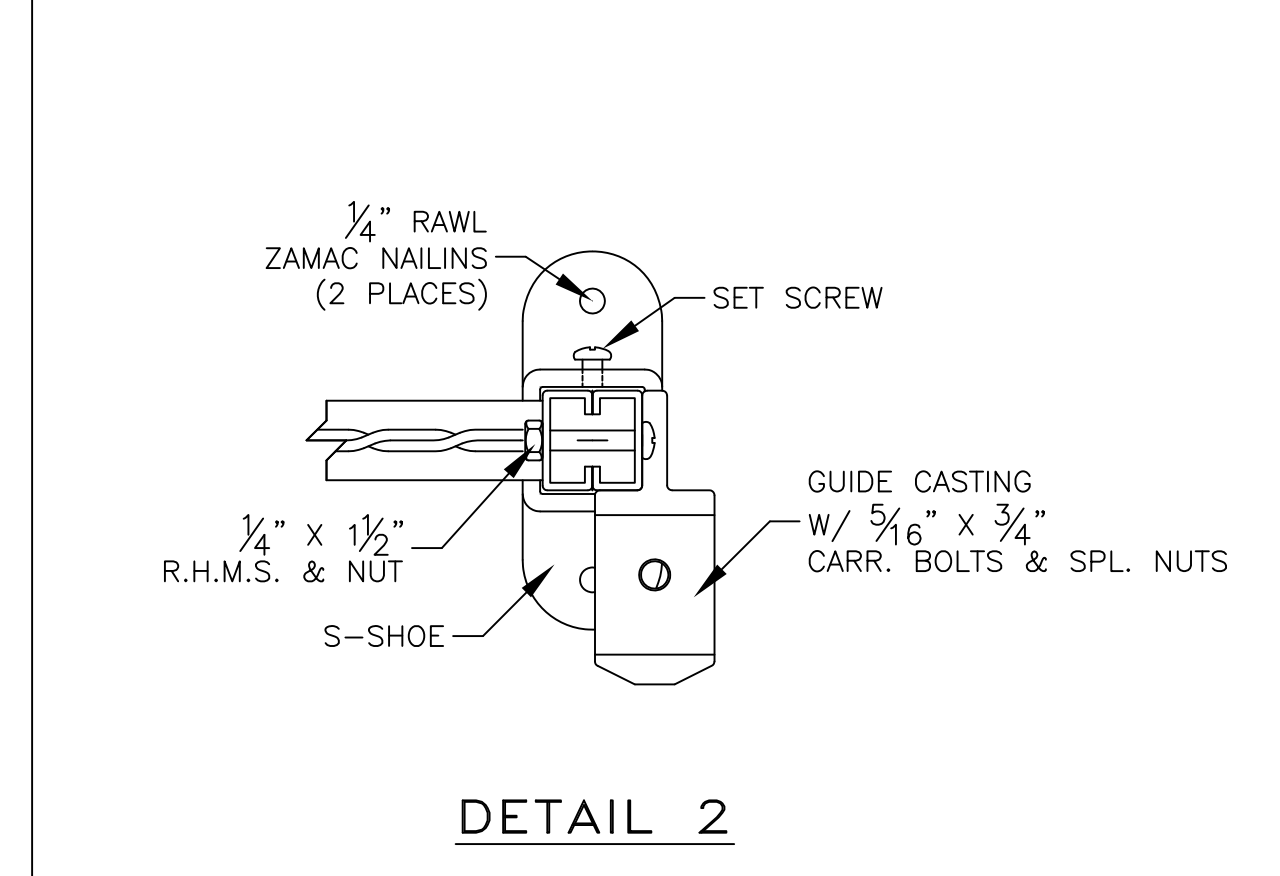
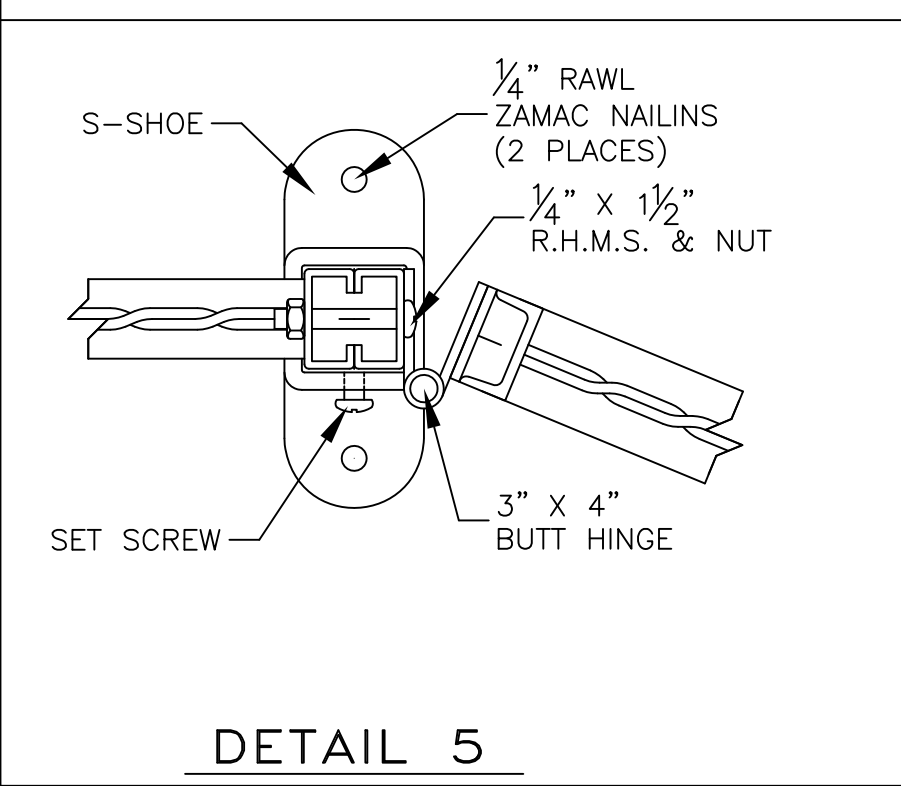
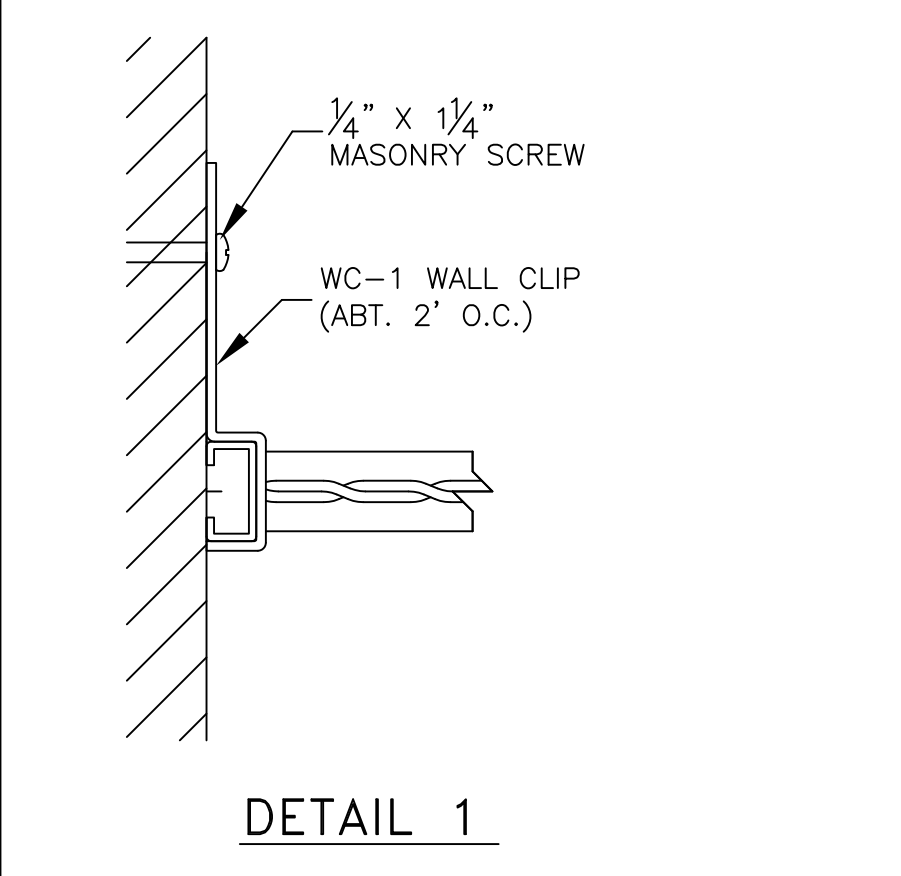


ELEVATION A  
SCALE: 3/4" = 1'-0"

ELEVATION B  
SCALE: 3/4" = 1'-0"



**DESIGN NOTES**

- OUR SYSTEM UTILIZES A TOP CAPPING CHANNEL THAT LOCKS THE PANELS TOGETHER AND STIFFENS THE ENTIRE RUN. WE RECOMMEND A MINIMUM OF 2" OF CLEARANCE BETWEEN THE TOP OF THE PARTITION AND THE CEILING IN ORDER TO INSTALL THIS CAPPING CHANNEL. IF THE TOP CAPPING CHANNEL IS NOT APPLICABLE, WE RECOMMEND THE USE OF OUR WC2 CLIP MOUNTED TO THE TOP OF THE PARTITION WITH A MINIMUM 1/2" GAP BETWEEN THE TOP OF THE PARTITION AND THE CEILING. THIS WILL ALLOW FOR SOME ADJUSTABILITY IN THE EVENT THAT THE CEILING IS NOT PERFECTLY FLAT, WHILE CREATING A VERY RIGID SYSTEM.
- DUE TO THE USE OF A DIAMOND PATTERN, THERE ARE ONLY VERY SPECIFIC WIDTHS AND HEIGHTS THAT WILL CREATE WHAT WE CALL A "GOOD" PANEL. ANY WIDTH AND HEIGHT CAN BE MADE, HOWEVER, IT WILL BE BOTH FASTER AND CHEAPER TO USE AS MANY "GOOD" PANELS AS POSSIBLE.
- ONLY OUR MOST STANDARD DETAILS ARE SHOWN HERE, AS WE HAVE SEVERAL HUNDRED DIFFERENT DETAILS FOR DIFFERENT MOUNTING APPLICATIONS. IF YOU DO NOT SEE WHAT YOU NEED HERE, OR IF YOU HAVE A CUSTOM APPLICATION, PLEASE CONTACT US AND ONE OF OUR ENGINEERS WILL BE ABLE TO HELP YOU WITH YOUR SPECIFIC NEEDS.
- OUR SYSTEMS ARE ALWAYS UPDATED TO MEET THE MOST CURRENT BUILDING CODES AND REGULATIONS. IF REQUIRED, DESIGN DATA AND STRUCTURAL CALCULATIONS CAN BE PROVIDED UPON REQUEST.

# OF PANELS:	5
# OF HINGED DOORS:	1
# OF SLIDE DOORS:	1
# OF TRANSOM PANELS:	2
# OF CUT OUT KITS:	0

**SPECIFICATIONS**  
ACORN NO. 130-A WIRE MESH PARTITION

WIRE:	NO. 10 GAUGE (.135")
MESH:	1 1/2" x 1 1/2" DIAMOND
VERTICAL FRAME:	1 1/2" x 3/8" C.R. CHANNEL
HORIZONTAL FRAME:	1" x 3/4" C.R. CHANNEL
CAPPING BAR:	2 1/2" x 1" C.R. CHANNEL
FLOOR SHOE:	2 1/2" HIGH CAST ALUMINUM
HINGE DOOR FRAME:	1 1/2" x 1/2" C.R. CHANNEL
LOCKING DEVICE:	MARKS LOCKSET (MODEL # W3700) WITH CYLINDER OUTSIDE AND RECESSED THUMB TURN KNOB INSIDE CYLINDERS BY OTHERS

ALL DIMENSIONS MUST BE FIELD VERIFIED PRIOR TO FABRICATION

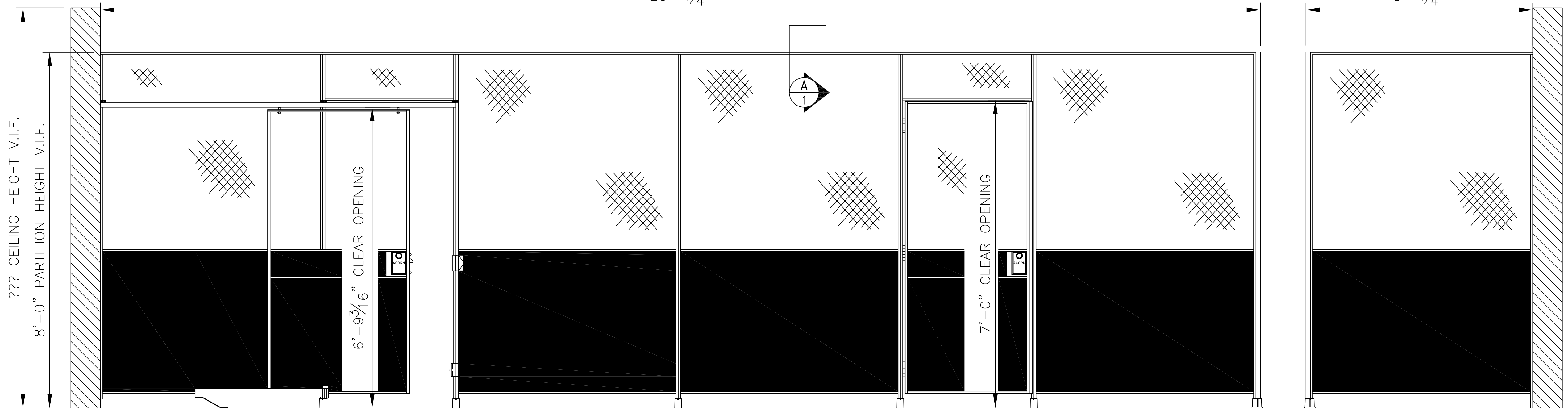
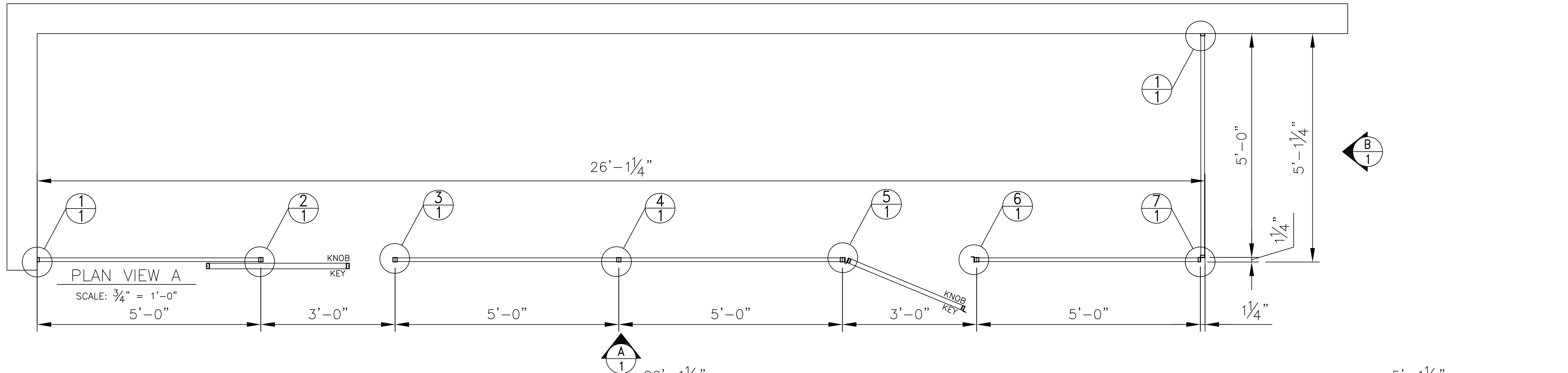
**CUSTOMER APPROVAL**  
 FABRICATE AS DRAWN    FABRICATE AS MARKED    RESUBMIT  
 SIGNATURE: \_\_\_\_\_ DATE: \_\_\_\_\_

**Chicago**  
 Phone: (800) 552-2676  
 Fax: (888) 452-2676  
**Acorn Wire and Iron Works**  
 2415 W. 21st Street Chicago, IL 60608

**Order No.** \_\_\_\_\_  
**Sheet No.** 1 of \_\_\_\_\_

**Product:** WIRE MESH PARTITION  
**Specification:** ACORN 130-A  
**Material Finish:** POWDER COAT-  
**Arch.-Eng. Drwg. Ref.:** \_\_\_\_\_  
**Drawn By:** \_\_\_\_\_  
**Revision:** \_\_\_\_\_

**Project Location:** \_\_\_\_\_  
**Architect:** \_\_\_\_\_  
**Gen. Contractor:** customer



**DESIGN NOTES**

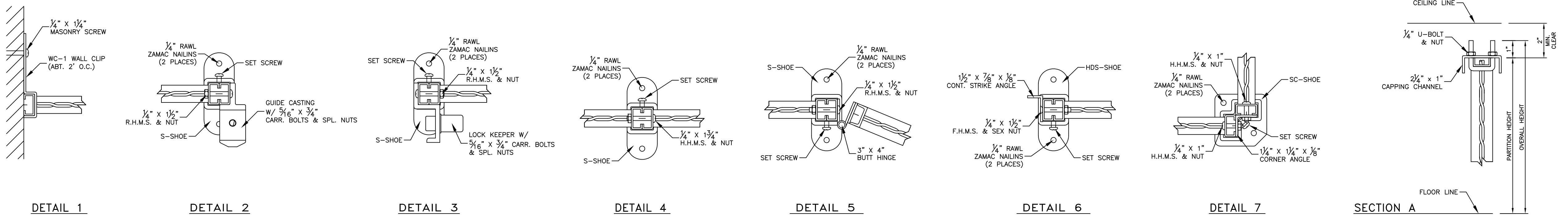
- OUR SYSTEM UTILIZES A TOP CAPPING CHANNEL THAT LOCKS THE PANELS TOGETHER AND STIFFENS THE ENTIRE RUN. WE RECOMMEND A MINIMUM OF 2" OF CLEARANCE BETWEEN THE TOP OF THE PARTITION AND THE CEILING IN ORDER TO INSTALL THIS CAPPING CHANNEL. IF THE TOP CAPPING CHANNEL IS NOT APPLICABLE, WE RECOMMEND THE USE OF OUR WC2 CLIP MOUNTED TO THE TOP OF THE PARTITION WITH A MINIMUM 1/2" GAP BETWEEN THE TOP OF THE PARTITION AND THE CEILING. THIS WILL ALLOW FOR SOME ADJUSTABILITY IN THE EVENT THAT THE CEILING IS NOT PERFECTLY FLAT, WHILE CREATING A VERY RIGID SYSTEM.
- DUE TO THE USE OF A DIAMOND PATTERN, THERE ARE ONLY VERY SPECIFIC WIDTHS AND HEIGHTS THAT WILL CREATE WHAT WE CALL A "GOOD" PANEL. ANY WIDTH AND HEIGHT CAN BE MADE. HOWEVER, IT WILL BE BOTH FASTER AND CHEAPER TO USE AS MANY "GOOD" PANELS AS POSSIBLE.
- ONLY OUR MOST STANDARD DETAILS ARE SHOWN HERE, AS WE HAVE SEVERAL HUNDRED DIFFERENT DETAILS FOR DIFFERENT MOUNTING APPLICATIONS. IF YOU DO NOT SEE WHAT YOU NEED HERE, OR IF YOU HAVE A CUSTOM APPLICATION, PLEASE CONTACT US AND ONE OF OUR ENGINEERS WILL BE ABLE TO HELP YOU WITH YOUR SPECIFIC NEEDS.
- OUR SYSTEMS ARE ALWAYS UPDATED TO MEET THE MOST CURRENT BUILDING CODES AND REGULATIONS. IF REQUIRED, DESIGN DATA AND STRUCTURAL CALCULATIONS CAN BE PROVIDED UPON REQUEST.

# OF PANELS:	5
# OF HINGED DOORS:	1
# OF SLIDE DOORS:	1
# OF TRANSOM PANELS:	2
# OF CUT OUT KITS:	0

**SPECIFICATIONS**  
 ACORN NO. 139-A WIRE MESH PARTITION

WIRE:	NO. 10 GAUGE (135)
MESH:	1 3/8" x 1 1/2" DIAMOND
VERTICAL FRAME:	1 1/2" x 3/8" C.R. CHANNEL
HORIZONTAL FRAME:	1" x 1/2" C.R. CHANNEL
CAPPING BAR:	2 1/2" x 1" C.R. CHANNEL
FLOOR SHOE:	2 1/2" HIGH CAST ALUMINUM
HINGE DOOR FRAME:	1 1/2" x 1/2" H.R. CHANNEL
SLIDING DOOR FRAME:	1 1/2" x 1/2" H.R. CHANNEL
FRAME:	1 1/2" x 1/2" H.R. HORIZONTAL CHANNEL
SHEET METAL BASE:	16 GA. SHEET METAL
LOCKING DEVICE:	MARKS LOCKSET (MODEL # W3820) WITH CYLINDER OUTSIDE AND RECESSED THUMB TURN KNOB INSIDE

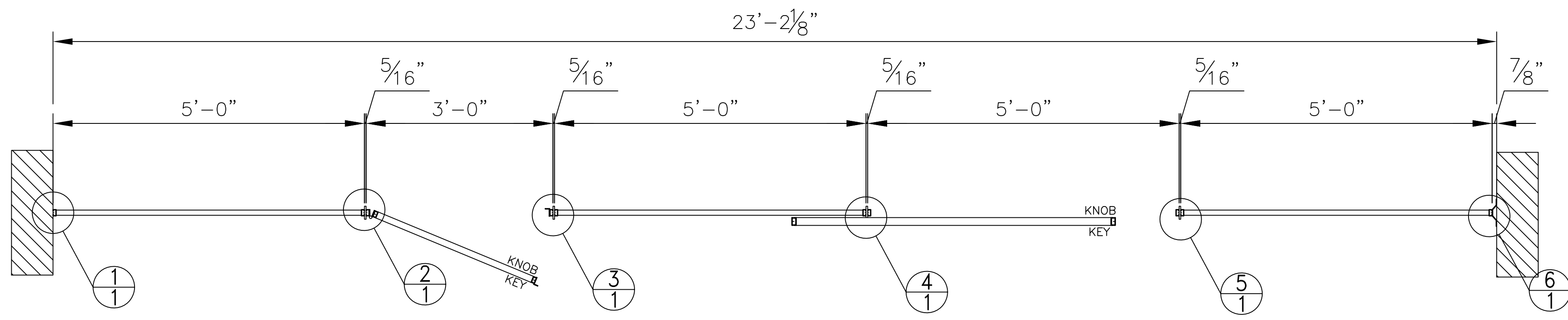
ALL DIMENSIONS MUST BE FIELD VERIFIED PRIOR TO FABRICATION



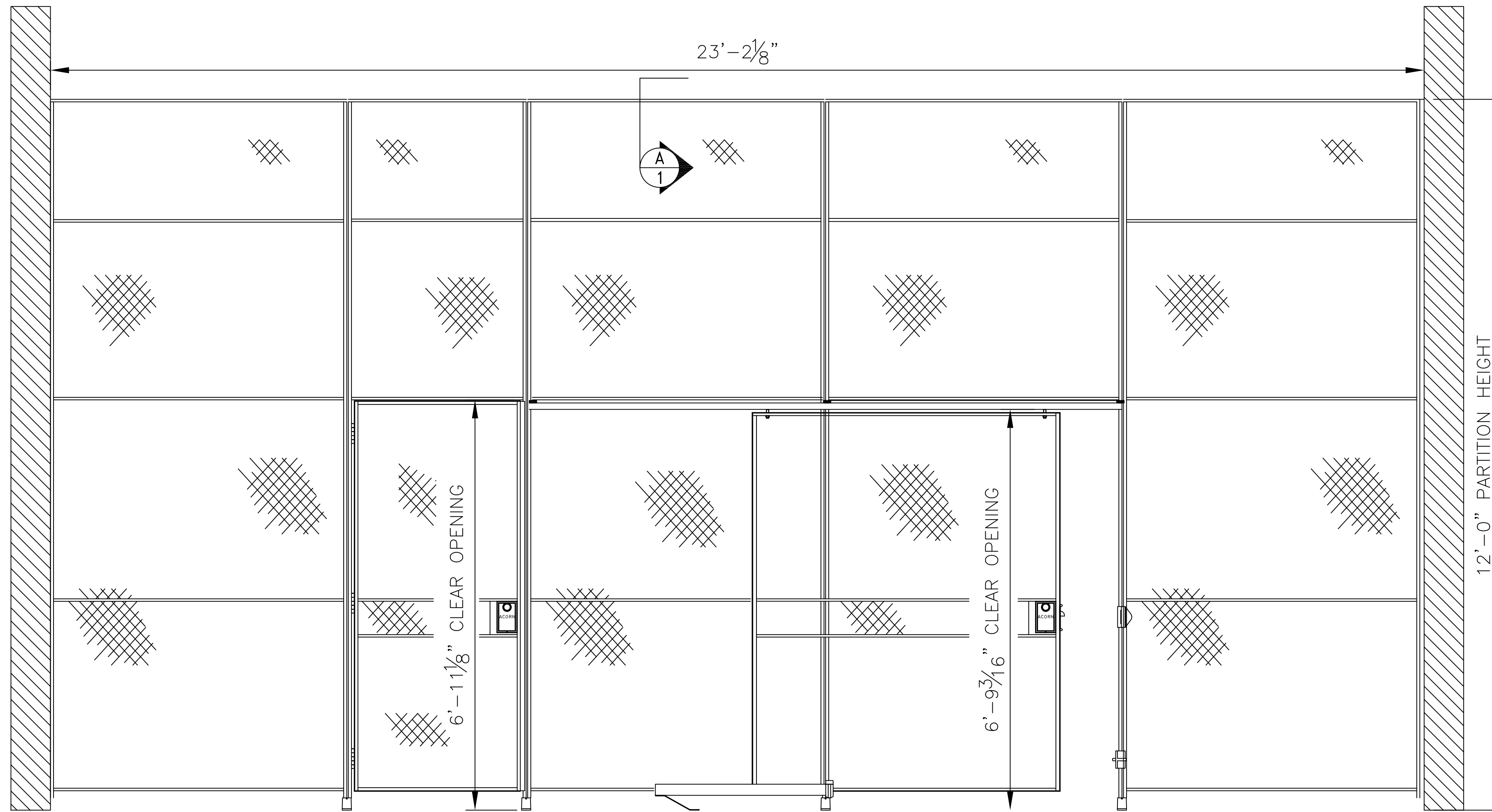
**CUSTOMER APPROVAL**

FABRICATE AS DRAWN  FABRICATE AS MARKED  RESUBMIT

SIGNATURE: \_\_\_\_\_ DATE: \_\_\_\_\_



TYP. PLAN VIEW  
SCALE: 3/8" = 1'-0"

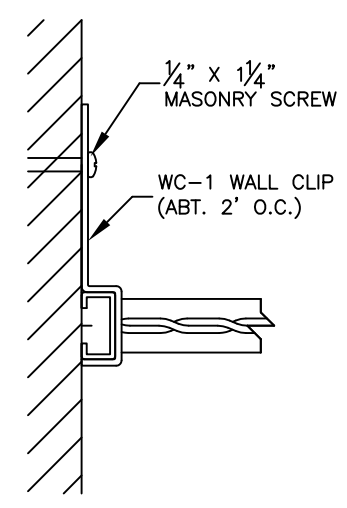


TYP. ELEVATION  
SCALE: 3/8" = 1'-0"

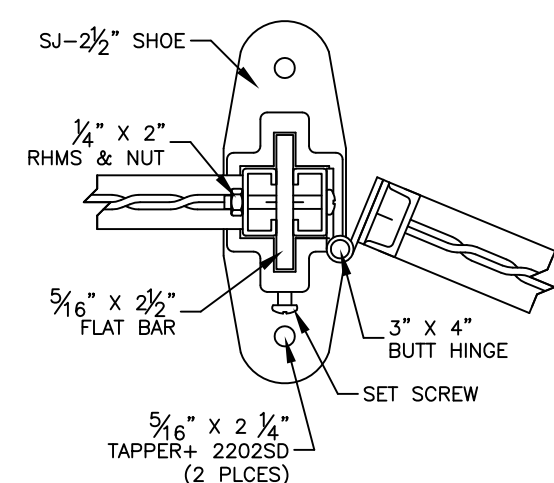
DESIGN NOTES

- OUR SYSTEM UTILIZES A TOP CAPPING CHANNEL THAT LOCKS THE PANELS TOGETHER AND STIFFENS THE ENTIRE RUN. WE RECOMMEND A MINIMUM OF 2" OF CLEARANCE BETWEEN THE TOP OF THE PARTITION AND THE CEILING IN ORDER TO INSTALL THIS CAPPING CHANNEL. IF THE TOP CAPPING CHANNEL IS NOT APPLICABLE, WE RECOMMEND THE USE OF OUR WC2 CLIP MOUNTED TO THE TOP OF THE PARTITION WITH A MINIMUM 1/2" GAP BETWEEN THE TOP OF THE PARTITION AND THE CEILING. THIS WILL ALLOW FOR SOME ADJUSTABILITY IN THE EVENT THAT THE CEILING IS NOT PERFECTLY FLAT, WHILE CREATING A VERY RIGID SYSTEM.
- DUE TO THE USE OF A DIAMOND PATTERN, THERE ARE ONLY VERY SPECIFIC WIDTHS AND HEIGHTS THAT WILL CREATE WHAT WE CALL A "GOOD" PANEL. ANY WIDTH AND HEIGHT CAN BE MADE, HOWEVER, IT WILL BE BOTH FASTER AND CHEAPER TO USE AS MANY "GOOD" PANELS AS POSSIBLE.
- ONLY OUR MOST STANDARD DETAILS ARE SHOWN HERE, AS WE HAVE SEVERAL HUNDRED DIFFERENT DETAILS FOR DIFFERENT MOUNTING APPLICATIONS. IF YOU DO NOT SEE WHAT YOU NEED HERE, OR IF YOU HAVE A CUSTOM APPLICATION, PLEASE CONTACT US AND ONE OF OUR ENGINEERS WILL BE ABLE TO HELP YOU WITH YOUR SPECIFIC NEEDS.
- OUR SYSTEMS ARE ALWAYS UPDATED TO MEET THE MOST CURRENT BUILDING CODES AND REGULATIONS. IF REQUIRED, DESIGN DATA AND STRUCTURAL CALCULATIONS CAN BE PROVIDED UPON REQUEST.

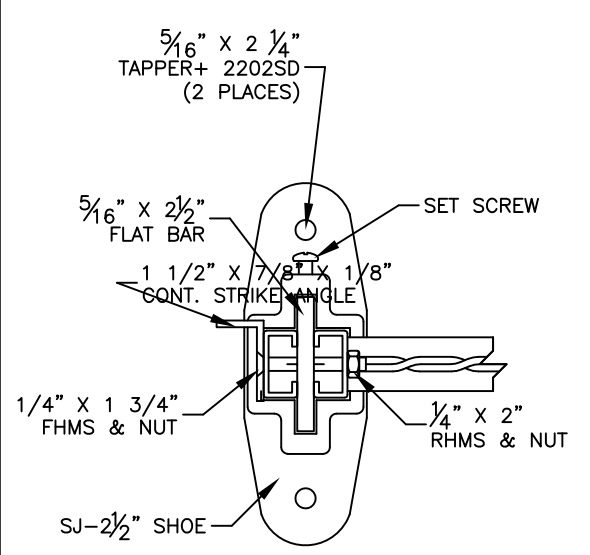
# OF PANELS:	3
# OF HINGED DOORS:	1
# OF SLIDE DOORS:	1
# OF TRANSOM PANELS:	2
# OF CUT OUT KITS:	0
# OF CAPPINGS:	0



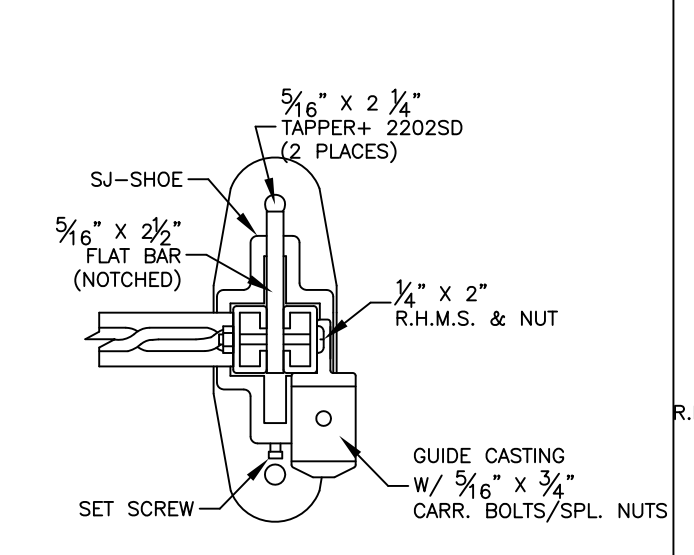
DETAIL 1



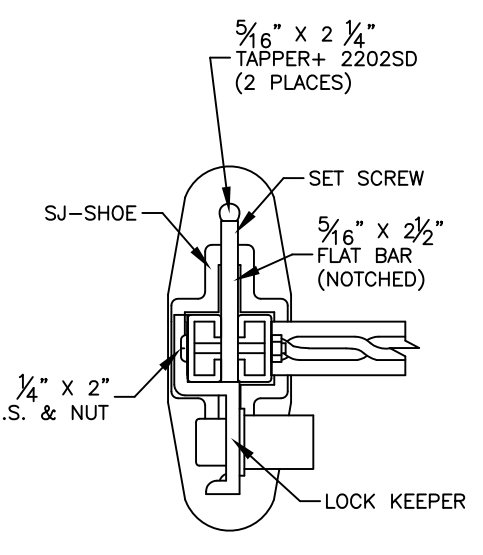
DETAIL 2



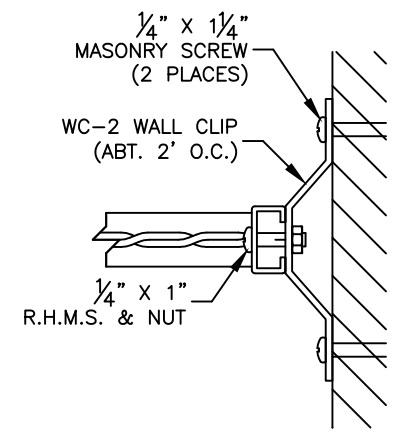
DETAIL 3



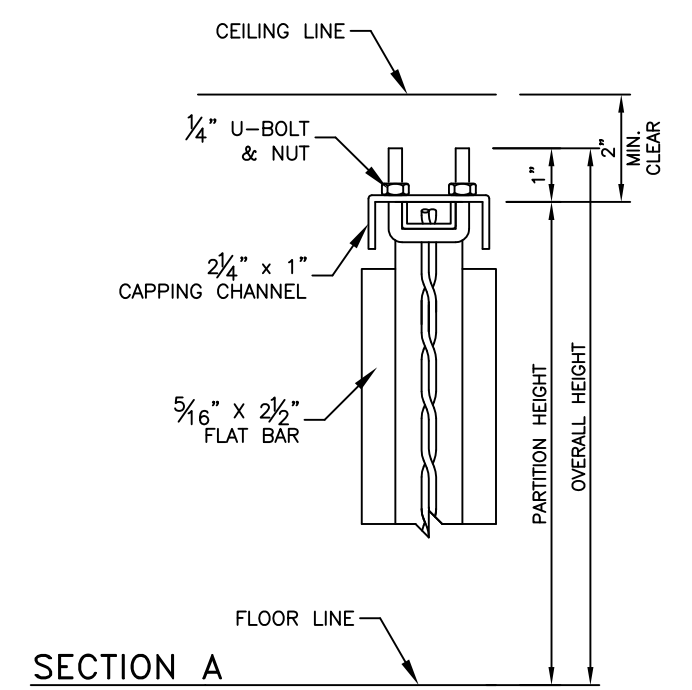
DETAIL 4



DETAIL 5



DETAIL 6  
THE WC-2 IS AN ADJUSTABLE BRACKET AND SHOULD BE INSTALLED LAST



SECTION A

SPECIFICATIONS

ACORN NO. 130-AL WIRE MESH PARTITION	
WIRE:	NO. 10 GAUGE (.135")
MESH:	1 1/2" x 1 1/2" DIAMOND
VERTICAL FRAME:	1 1/2" x 3/8" C.R. CHANNEL
HORIZONTAL FRAME:	1" x 1/2" C.R. CHANNEL
VERTICAL STIFFENERS:	3/16" x 2 1/2" C.R. FLAT BAR
CAPPING BAR:	2 1/4" x 1" C.R. CHANNEL
FLOOR SHOE:	2 1/2" HIGH CAST ALUMINUM
HINGE DOOR FRAME:	1 1/2" x 1/2" H.R. CHANNEL
SLIDING DOOR:	1 1/2" x 3/4" H.R. CHANNEL
FRAME:	1 1/2" x 1/2" H.R. HORIZONTAL CHANNEL
LOCKING DEVICE:	MARKS LOCKSET MODEL # W3620 WITH CYLINDER OUTSIDE AND RECESSED THUMB TURN KNOB INSIDE CYLINDERS BY OTHERS
ALL DIMENSIONS MUST BE FIELD VERIFIED PRIOR TO FABRICATION	

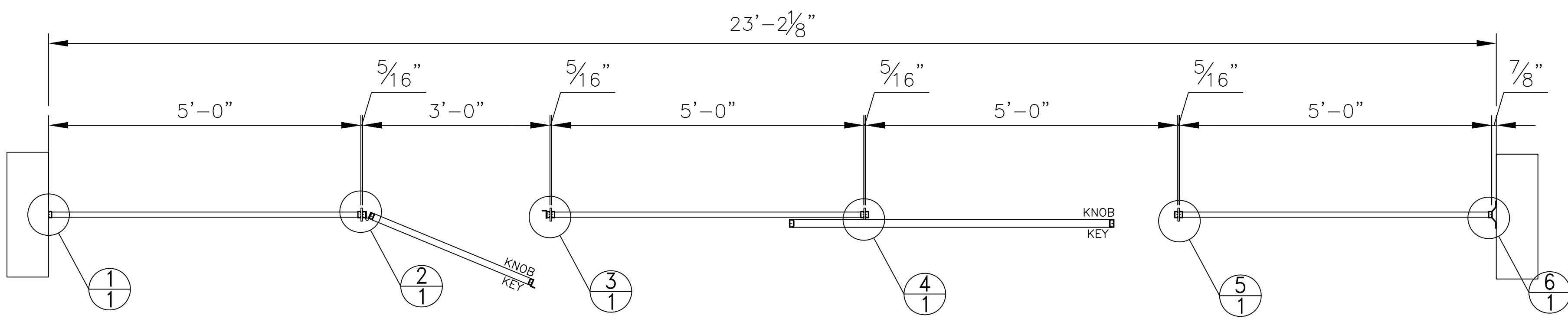
CUSTOMER APPROVAL  
 FABRICATE AS DRAWN  FABRICATE AS MARKED  RESUBMIT  
 SIGNATURE: \_\_\_\_\_ DATE: \_\_\_\_\_

**Chicago**  
 Phone: (800) 552-2676  
 Fax: (888) 452-2676  
**Acorn Wire and Iron Works**  
 2415 W. 21st Street Chicago, IL 60608

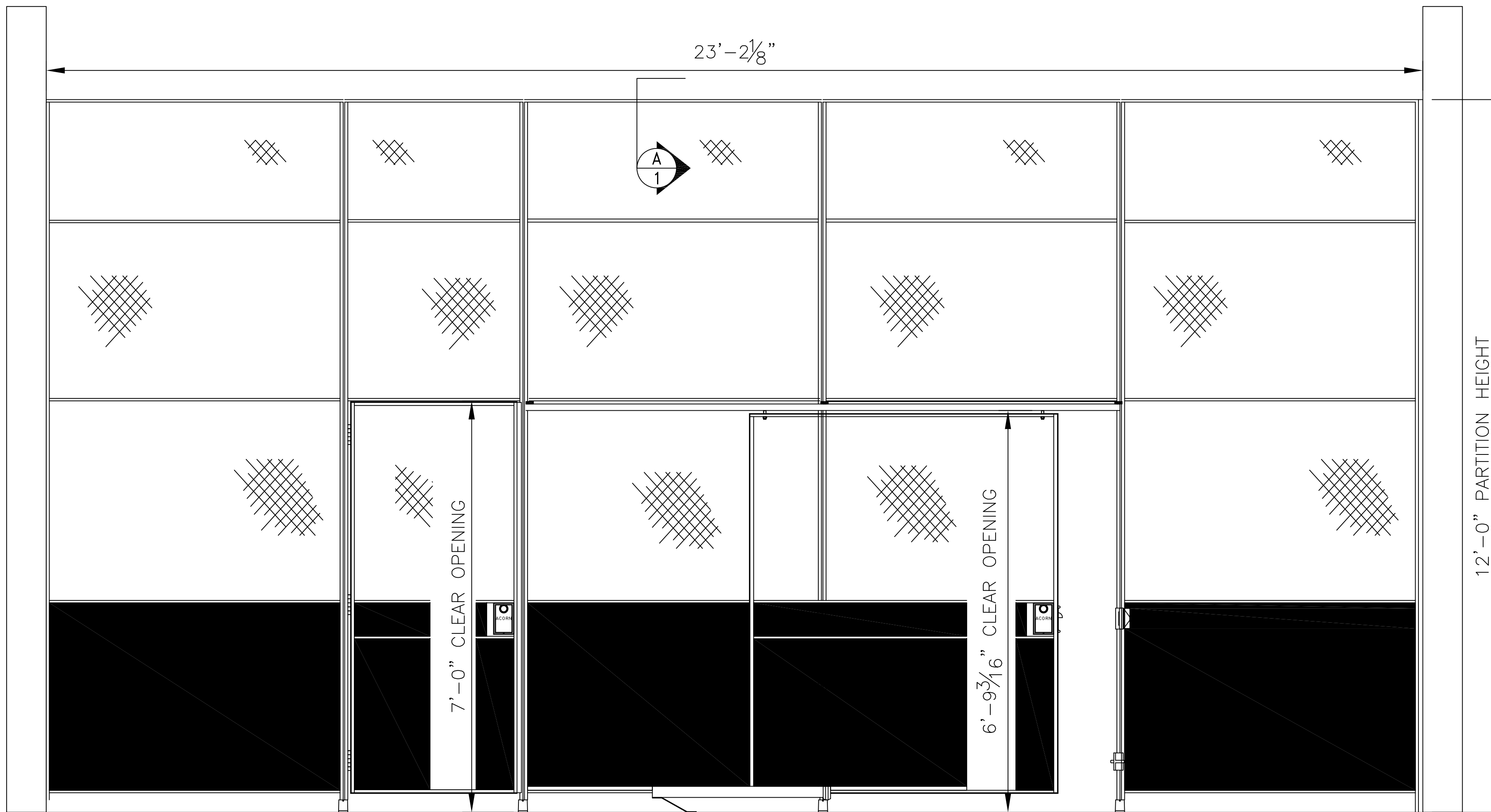
Order No. \_\_\_\_\_  
 Sheet No. 1 of 1

Product: WIRE MESH PARTITION  
 Specification: ACORN 130-AL  
 Material Finish: POWDER COAT  
 Archt.-Eng. Drwg. Ref. \_\_\_\_\_  
 Drawn By: ER \_\_\_\_\_  
 Date: \_\_\_\_\_  
 Revision: \_\_\_\_\_

Project: \_\_\_\_\_  
 Location: \_\_\_\_\_  
 Architect: \_\_\_\_\_  
 Gen. Contractor: \_\_\_\_\_  
 customer



TYP. PLAN VIEW  
SCALE: 3/8" = 1'-0"



TYP. ELEVATION  
SCALE: 3/8" = 1'-0"

**DESIGN NOTES**

- OUR SYSTEM UTILIZES A TOP CAPPING CHANNEL THAT LOCKS THE PANELS TOGETHER AND STIFFENS THE ENTIRE RUN. WE RECOMMEND A MINIMUM OF 2" OF CLEARANCE BETWEEN THE TOP OF THE PARTITION AND THE CEILING IN ORDER TO INSTALL THIS CAPPING CHANNEL. IF THE TOP CAPPING CHANNEL IS NOT APPLICABLE, WE RECOMMEND THE USE OF OUR WC2 CLIP MOUNTED TO THE TOP OF THE PARTITION WITH A MINIMUM 1/2" GAP BETWEEN THE TOP OF THE PARTITION AND THE CEILING. THIS WILL ALLOW FOR SOME ADJUSTABILITY IN THE EVENT THAT THE CEILING IS NOT PERFECTLY FLAT, WHILE CREATING A VERY RIGID SYSTEM.
- DUE TO THE USE OF A DIAMOND PATTERN, THERE ARE ONLY VERY SPECIFIC WIDTHS AND HEIGHTS THAT WILL CREATE WHAT WE CALL A "GOOD" PANEL. ANY WIDTH AND HEIGHT CAN BE MADE. HOWEVER, IT WILL BE BOTH FASTER AND CHEAPER TO USE AS MANY "GOOD" PANELS AS POSSIBLE.
- ONLY OUR MOST STANDARD DETAILS ARE SHOWN HERE, AS WE HAVE SEVERAL HUNDRED DIFFERENT DETAILS FOR DIFFERENT MOUNTING APPLICATIONS. IF YOU DO NOT SEE WHAT YOU NEED HERE, OR IF YOU HAVE A CUSTOM APPLICATION, PLEASE CONTACT US AND ONE OF OUR ENGINEERS WILL BE ABLE TO HELP YOU WITH YOUR SPECIFIC NEEDS.
- OUR SYSTEMS ARE ALWAYS UPDATED TO MEET THE MOST CURRENT BUILDING CODES AND REGULATIONS. IF REQUIRED, DESIGN DATA AND STRUCTURAL CALCULATIONS CAN BE PROVIDED UPON REQUEST.

# OF PANELS:	3
# OF HINGED DOORS:	1
# OF SLIDE DOORS:	1
# OF TRANSOM PANELS:	2
# OF CUT OUT KITS:	0
# OF CAPPINGS:	0

**SPECIFICATIONS**

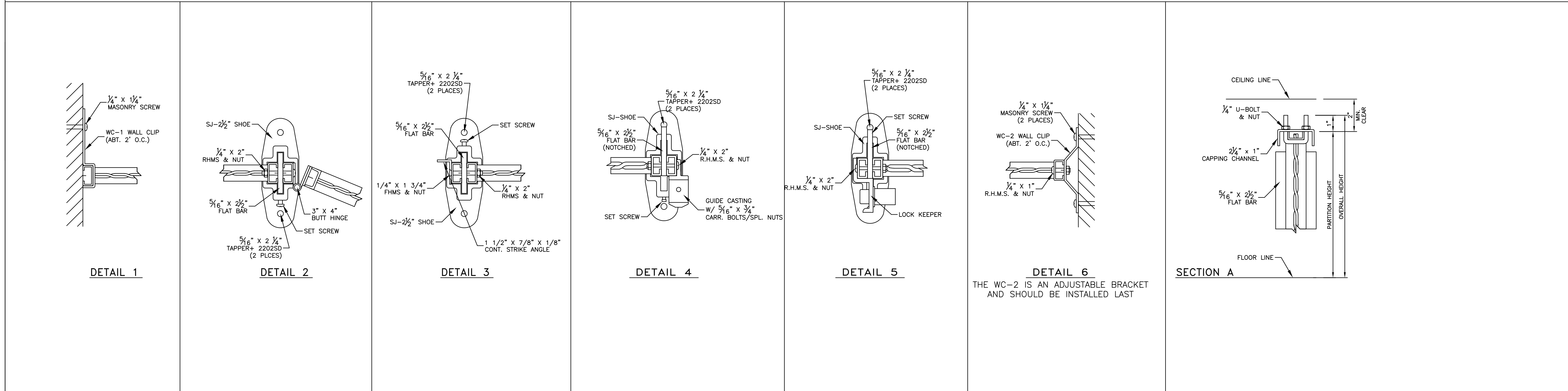
ACORN NO. 139-AL WIRE MESH PARTITION	
WIRE:	NO. 10 GAUGE (1.357)
MESH:	1 1/2" x 1 1/2" DIAMOND
VERTICAL FRAME:	1 1/2" x 3/4" C.R. CHANNEL
HORIZONTAL FRAME:	1" x 1/2" C.R. CHANNEL
VERTICAL STIFFENERS:	5/16" x 2 1/2" C.R. FLAT BAR
CAPPING BAR:	2 1/2" x 1" C.R. CHANNEL
FLOOR SHOE:	2 1/2" HIGH CAST ALUMINUM
HINGE DOOR FRAME:	1 1/2" x 1/2" H.R. CHANNEL
SLIDING DOOR:	1 1/2" x 3/4" H.R. CHANNEL
FRAME:	1/2" x 1/2" H.R. HORIZONTAL CHANNEL
SHEET METAL BASE:	18 GA. SHEET METAL
LOCKING DEVICE:	MARKS LOCKSET (MODEL # W3820) WITH CYLINDER OUTSIDE AND RECESSED THUMB TURN KNOB INSIDE CYLINDERS BY ACORN

ALL DIMENSIONS MUST BE FIELD VERIFIED PRIOR TO FABRICATION

**CUSTOMER APPROVAL**

FABRICATE AS DRAWN    FABRICATE AS MARKED    RESUBMIT

SIGNATURE: \_\_\_\_\_ DATE: \_\_\_\_\_



**Product** WIRE MESH PARTITION  
**Specification** ACORN 139-AL  
**Material Finish** POWDER COAT—  
**Arch't.-Eng. Drwg. Ref.** \_\_\_\_\_  
**Drawn By** \_\_\_\_\_  
**Revision** \_\_\_\_\_  
**Date** \_\_\_\_\_

**Project** \_\_\_\_\_  
**Location** \_\_\_\_\_  
**Architect** \_\_\_\_\_  
**Gen. Contractor** \_\_\_\_\_  
**customer** \_\_\_\_\_

**Chicago**  
**Phone: (800) 552-2676**  
**Fax: (888) 452-2676**  
**Acorn Wire and Iron Works**  
2415 W. 21st Street Chicago, IL 60608